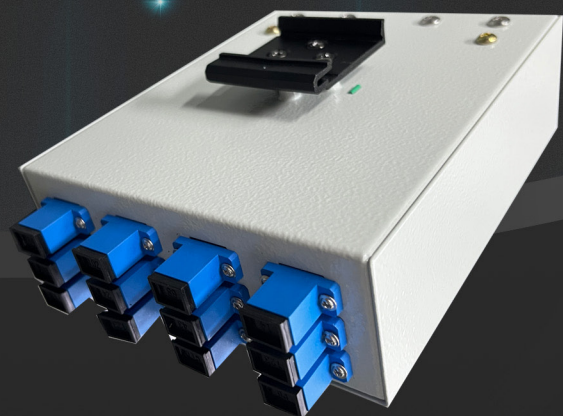


威 佳

威佳电气,
每位工程师的专业选择!

UE-iLink-GT

Product Introduction



使用产品前请仔细阅读本使用说明，并请妥善保管

1 产品概述

Product Description

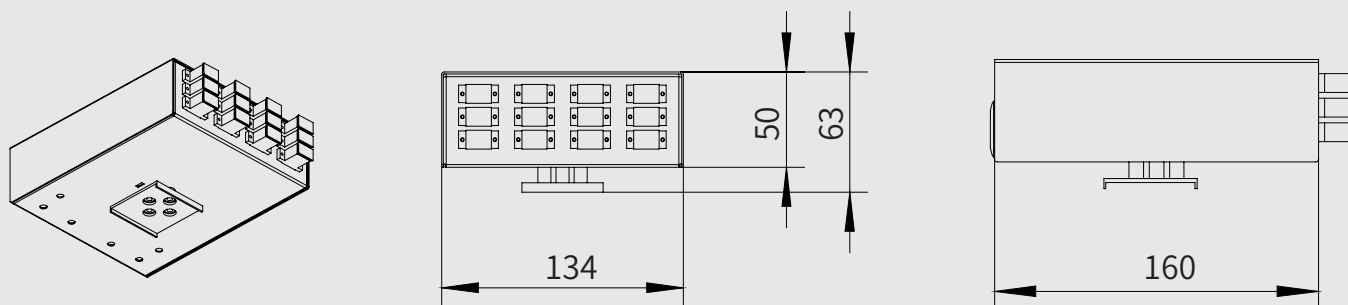
- ▶ 维护过程中，清晰的光路标识，有效避免混淆。标准尺寸，重量轻，结构合理；
 - ▶ 熔纤盘内部结构坚固紧密，安装光纤 / 线缆条理分配盘纤与固定，有效保护光纤不受损以及弯曲半径；
 - ▶ 各种面板，以适应不同的适配器接口；
 - ▶ 板上的前标便于识别和操作；
 - ▶ 易于管理和操作。
- ▶ Clear optical path identification shall be provided during maintenance to effectively avoid confusion. Standard size, light weight and reasonable structure;
 - ▶ The internal structure of the fused fiber plate is strong and compact. The optical fiber/cable is arranged and fixed to effectively protect the optical fiber from damage and bending radius;
 - ▶ Various panels to adapt to different adapter interfaces;
 - ▶ The front mark on the board is easy to identify and operate;
 - ▶ Easy to manage and operate.

1.1 产品参数 Product Parameters

型号 Model	UE-iLink-GT	
高度 Height	50mm	
连接器类型 Connector Type	SC LC FC ST 适配器 SC LC FC ST Adapter	
应用 Application	FTTH FTTB FTTX	
样式 Style	导轨式 Guideway type	
端口 Port	12C	8C
材质 Material	冷轧钢板 1.0mm Cold Rolled Steel Sheet	
表面处理 Surface Treatment	RAL 7035	
防腐等级 Anti Corrosion Grade	C2	
防护等级 Degree of Protection	IP20	

2 结构图

Structure Diagram



UE-iLink-GT

Product Introduction

Vaule Plus,
Professional Choice for Each Engineer!

Wuxi Vaule Plus Electric Power Technology Co.,Ltd.
South side of shuofanlihe road and west side of sun'an highway, Xinwu District, Wuxi City
Email sale@vauleplus.com

